

Art Room Model - EMILY

Height : 179

Chest : 82

Waist : 70

Hips : 95

Size : 38

Shoes : 39

Hair : BLONDE

Eyes : GREEN





CHANTILLY W I B V C E



Photographed by **Elyse Potter**
Model Emily Doherty,
Stylist Czarina Argel,
Assistant Thi My Giang Nguy,
MUA Ghada Nouh

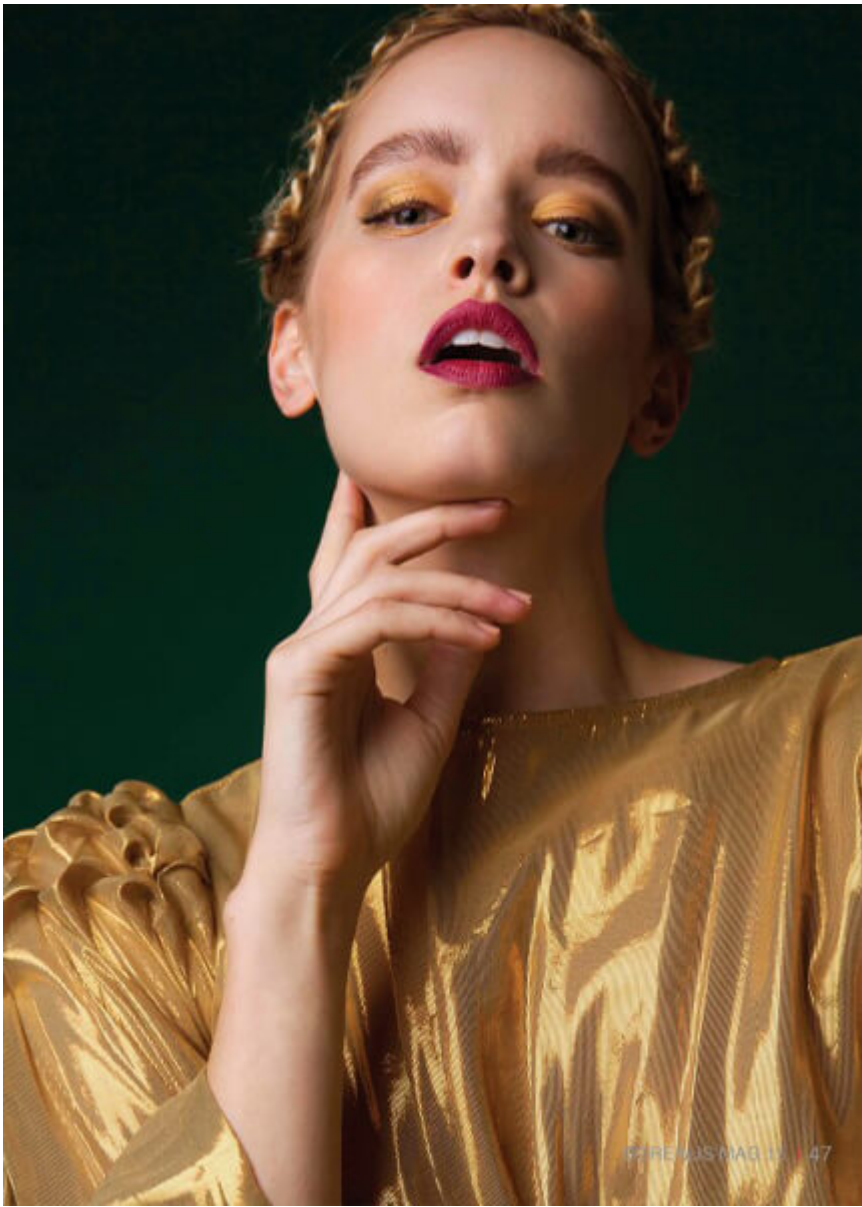
www.AscarifashionMag.com



on Emily
Dress by *Cecilie Copenhagen*
Necklace by *Reliquia*
Earrings by *vintage*































Glassons square neck rib tank in Coco Pops,
Rowie the Label 'Winston' shorts in Almond,
Reliquia Jewellery 'Disco Hoops' in Gold.



Glasons square neck rib tank in Coco Pops,
Rowie the Label Winston shorts in Almond
Reliqua Jewellery 'Disco Hoops' in Gold

